

N NEWTIMES HAIR

N NEWTIMES HAIR

🌐 www.newtimeshair.com

▶ Youtube: Newtimes Hair

📷 IG: newtimeshairofficial

📘 FB: Newtimes Hair

CONTACT

Email: info@newtimeshair.com

WhatsApp: 86-186-6193-9293

ADDRESS: 1200 S. Diamond Bar Blvd.

Diamond Bar, CA 91765

TEL:

US Office : 1-626-586-3352

CN Office : 86-186-6193-9293

MAKE EVERY PIECE WORTH IT

TOPPER & WIG
COLLECTIONS



FACTORY DIRECT



Newtimes Hair

is a leading manufacturer of women's hairpieces, dedicated to excellence and innovation in every product we create. Our skilled artisans meticulously craft each hairpiece using only the finest human hair, ensuring an exceptionally realistic look and feel.





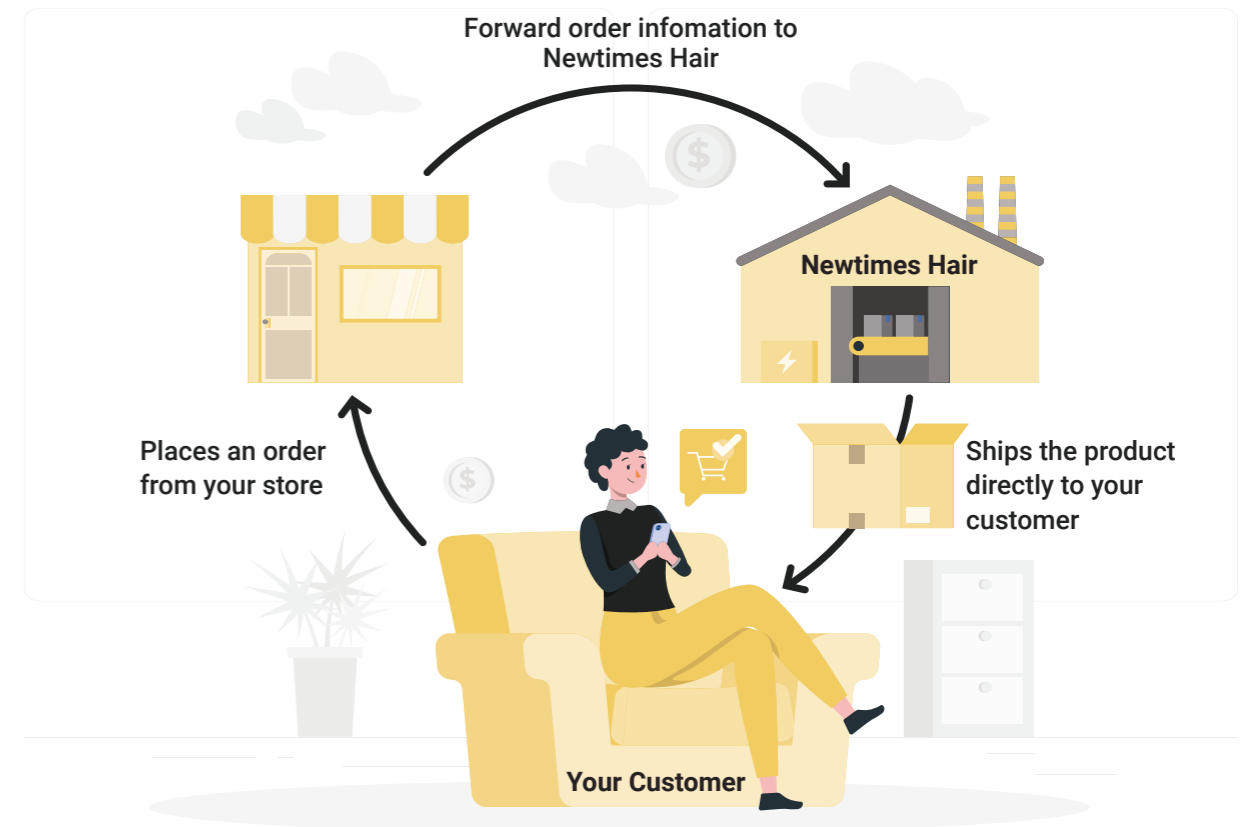
CUSTOM LOGO & PACKAGING



WHY CHOOSE US?

-  Competitive factory-direct pricing
-  Superior hair quality & expert ventilation techniques
-  High production capacity to meet every demand
-  Custom logo & packaging services
-  US & Europe warehouses for fast, local delivery and support
-  Dedicated PRD team perfects your sample orders

DROPSHIPPING SERVICE

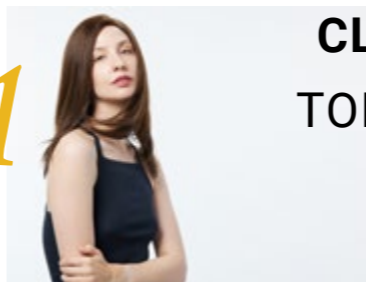


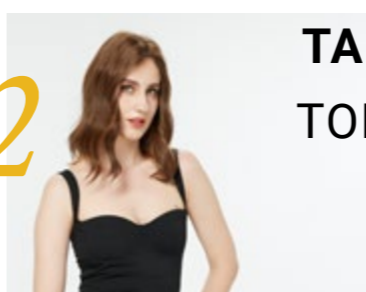
You can buy individual products (not in bulk) from us. We will package the products with your customized packaging (if you like), ship the products to your customer, and have your name shown as the sender. Dropshipping will effectively minimize your expenses associated with inventory, logistics, packaging, and staffing.

CONTENTS

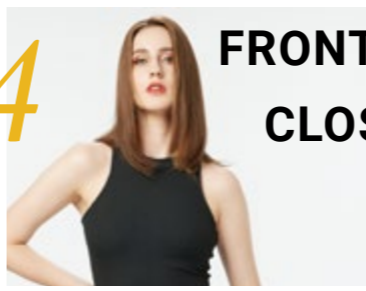
FACTORY DIRECT _01

WHY CHOOSE US? _03


01  **CLIP-ON
TOPPERS** _07

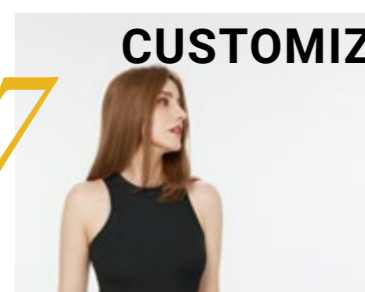
02  **TAPE-ON
TOPPERS** _19

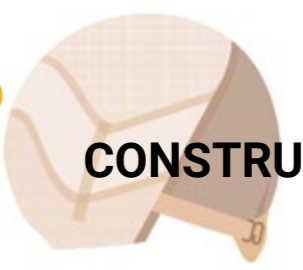
03  **INTEGRATION
TOPPERS** _23

04  **FRONTALS &
CLOSURES** _27

05  **MEDICAL
GRADE
WIGS** _32

06  **FASHION
WIGS** _37

07  **CUSTOMIZATION** _41

08  **BASE
CONSTRUCTIONS** _43

SUPPLIES _55

BEFORE & AFTER _56

HAIR COLOR CHARTS _57



Promote your studio with premium clip-on toppers designed for daily use, comfort, and durability, ensuring maximum client satisfaction.

01

CLIP-ON TOPPERS

EASY ATTACHMENT/REMOVAL

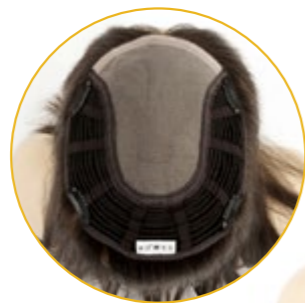
EVERYDAY WEAR

BREATHABLE


LONG LASTING

JULIE

Base Design Fine mono with wefts
Hair Type 100% Mongolian remy hair
Cap Sizes 5.5"×5.5" / 13.75x13.75cm
Lengths 14",16" / 35cm, 40cm
Density 120%
Wave/Curl Natural straight



Colors

Scan QR Code 

#NC	#2	#4	#6	#8
#22	#60	#TMR	#TMJ	#MBLOND


Women's Premier Human Hair Color Ring

KAILANI

Base Design Hand-tied lace with poly strips
Hair Type 100% Mongolian remy hair
Cap Sizes 5.5"×6" / 13.75x15cm
Lengths 14" / 35cm
Density 120%
Wave/Curl Natural straight



Colors

Scan QR Code 

#NC	#2	#4	#6	#8
#22	#60	#TMR	#TMJ	#MBLOND


Women's Premier Human Hair Color Ring

SIDNEY

Base Design Hand-tied fine welded mono
Hair Type 100% Mongolian remy hair
Cap Sizes 13.5×8.5cm
Lengths 14",16" / 35cm, 40cm
Density 100%
Wave/Curl Natural straight



Colors

Scan QR Code 

#NC	#2	#4	#6	#8
#22	#60	#TMR	#TMJ	#MBLOND


Women's Premier Human Hair Color Ring

ELOISE

Base Design Hand-tied fine welded mono with dual-layer mono at sides and back
Hair Type 100% Mongolian remy hair
Cap Sizes 4.75"×6.5" / 12x16.25cm
Lengths 14" / 35cm
Density 100%
Wave/Curl Natural straight



Colors

Scan QR Code 

#NC	#2	#4	#6	#8
#22	#60	#TMR	#TMJ	#MBLOND

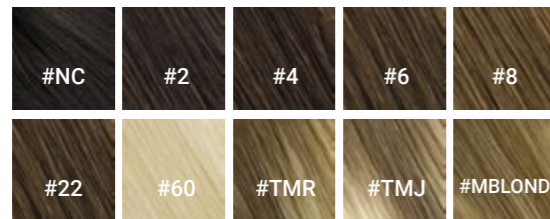
Women's Premier Human Hair Color Ring

ORPHA

Base Design Silk top with durable mono
Hair Type 100% Mongolian remy hair
Cap Sizes 6"x6.5"/ 15x16.25cm
Lengths 14"/ 35cm
Density 120%
Wave/Curl Natural straight

Colors

Scan QR Code



Women's Premier Human Hair Color Ring

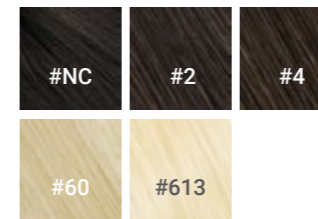


MT5*6.5

Base Design Fine mono with a poly perimeter
Hair Type 100% Chinese remy hair
Cap Sizes 5"x6.5"/ 12.5x16.25cm
Lengths 14", 16"/ 35cm, 40cm
Density 120%
Wave/Curl Natural straight

Colors

Scan QR Code



Women's Human Hair Color Ring

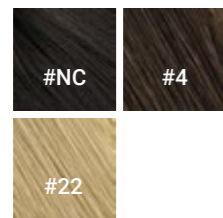


ST-2

Base Design Silk top with durable mono and ribbon
Hair Type 100% Mongolian remy hair
Cap Sizes 16cm x 18cm
Lengths 12"/ 30cm
Density 130%
Wave/Curl Natural straight

Colors

Scan QR Code



Women's Human Hair Color Ring

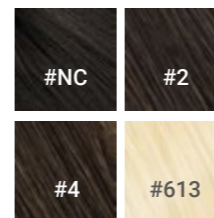


ST6*7

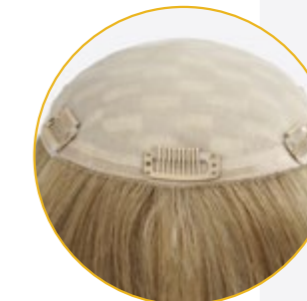
Base Design Realistic silk top with poly
Hair Type 100% Mongolian remy hair
Cap Sizes 6"x7"/ 15x17.5cm
Lengths 12",14",16"/ 30cm, 35cm, 40cm
Density 130%
Wave/Curl Natural straight

Colors

Scan QR Code



Women's Human Hair Color Ring



STL

Base Design Silk top with a poly perimeter and a lace front

Hair Type 100% Remy hair

Cap Sizes 6"x6.5"

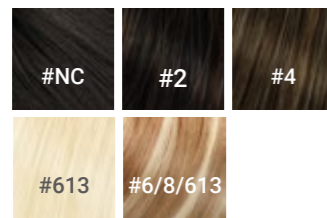
Lengths 16" / 40cm

Density 130%

Wave/Curl Natural straight

Colors

Scan QR Code



Women's Human Hair Color Ring



IN18*19

Base Design Imitation silk top with soft mono and wefts

Hair Type 100% Remy hair

Cap Sizes 18x19cm

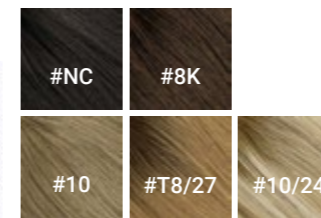
Lengths 14", 16", 18" / 35cm, 40cm, 45cm

Density 120%

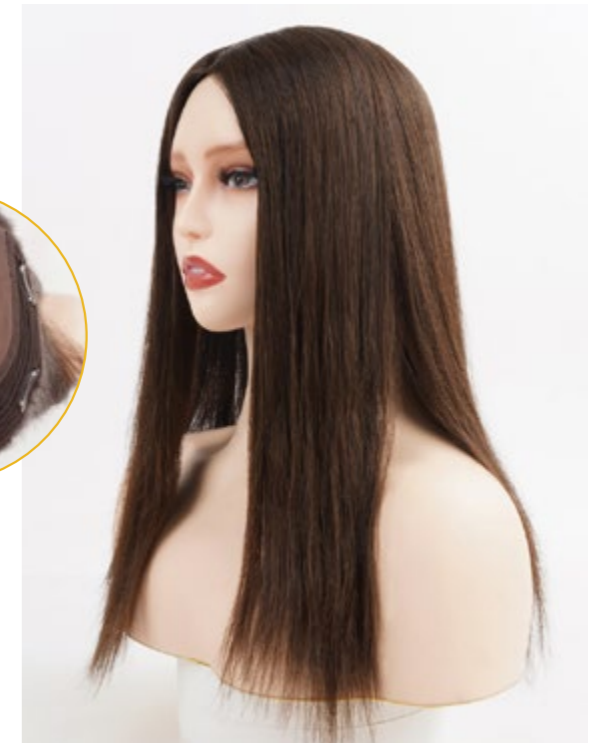
Wave/Curl Natural straight

Colors

Scan QR Code



Women's Human Hair Color Ring



STWL8*8

Base Design Silk top with wefts and a lace front

Hair Type 100% Remy hair

Cap Sizes 8"x8" / 20x20cm

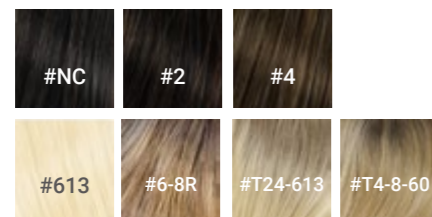
Lengths 16" / 40cm

Density 130%

Wave/Curl Natural straight

Colors

Scan QR Code



Women's Human Hair Color Ring



FST9*14

Base Design Imitation silk top with soft silk mono

Hair Type 100% Remy hair

Cap Sizes 9x14cm

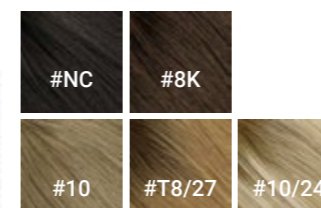
Lengths 14", 16" / 35cm, 40cm

Density 120%

Wave/Curl Natural straight

Colors

Scan QR Code



Women's Human Hair Color Ring



MT 3*5

Base Design Mono top with a poly perimeter

Hair Type 100% Remy hair

Cap Sizes 3"x5" / 7.5x12.5cm

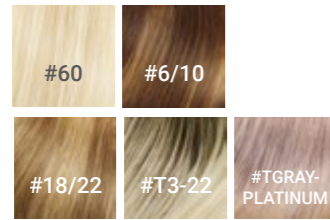
Lengths 12" / 30cm

Density 130%

Wave/Curl Natural straight

Colors

Scan QR Code



Women's Human Hair Color Ring



STW 8*8

Base Design Silk top with wefts

Hair Type 100% Remy hair

Cap Sizes 8"x8" / 20x20cm

Lengths 12", 16" / 30cm, 40cm

Density 130%

Wave/Curl Natural straight

Colors

Scan QR Code



Women's Human Hair Color Ring



ST 5*3

Base Design Silk top with a poly perimeter

Hair Type 100% Remy hair

Cap Sizes 3"x5" / 7.5x12.5cm

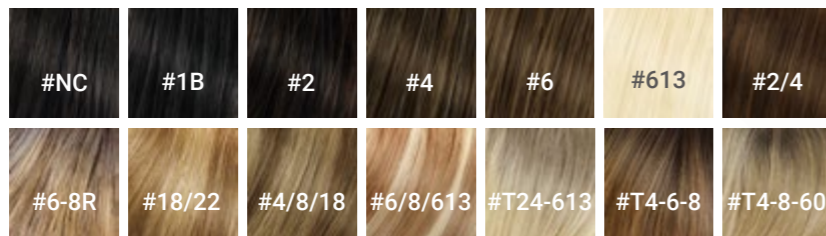
Lengths 12", 14", 16", 18", 20" / 30cm, 35cm, 40cm, 45cm, 50cm

Density 130%

Wave/Curl Natural straight

Colors

Scan QR Code



Women's Human Hair Color Ring



STW 6*6.5

Base Design Silk top with wefts

Hair Type 100% Remy hair

Cap Sizes 6"x6.5" / 15x16.25cm

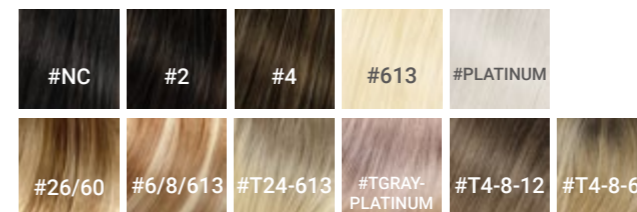
Lengths 12", 14", 16", 18", 20" / 30cm, 35cm, 40cm, 45cm, 50cm

Density 130%

Wave/Curl Natural straight

Colors

Scan QR Code



Women's Human Hair Color Ring




ST5*2.75

Base Design Silk top with poly
Hair Type 100% Remy hair
Cap Sizes 2.75"x5" / 7x12.5cm
Lengths 14" / 35cm
Density 150%
Wave/Curl Natural straight



Colors

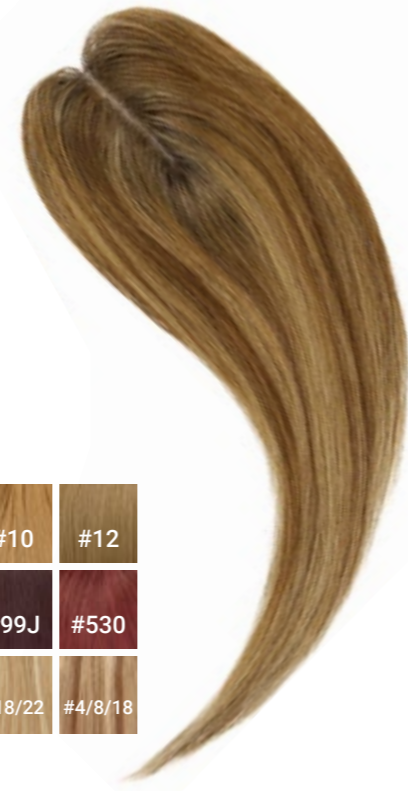
Scan QR Code 

#1	#1B	#2	#3	#4	#6	#7C	#8	#10	#12	#14
#16	#18	#22	#27	#30	#33	#60	#99J	#530	#613	#614
#695T	#CHERRY	#WHITE	#GRAY	#1B/33	#4/33	#14/22	#18/22	#4/8/18	#18/22	#T4-8-18


Women's Human Hair Color Ring

SPU

Base Design Easy-to-maintain clear PU with ribbon
Hair Type 100% Remy hair
Cap Sizes 2"x4.75" / 5x12cm
Lengths 14" / 35cm
Density 150%
Wave/Curl Natural straight

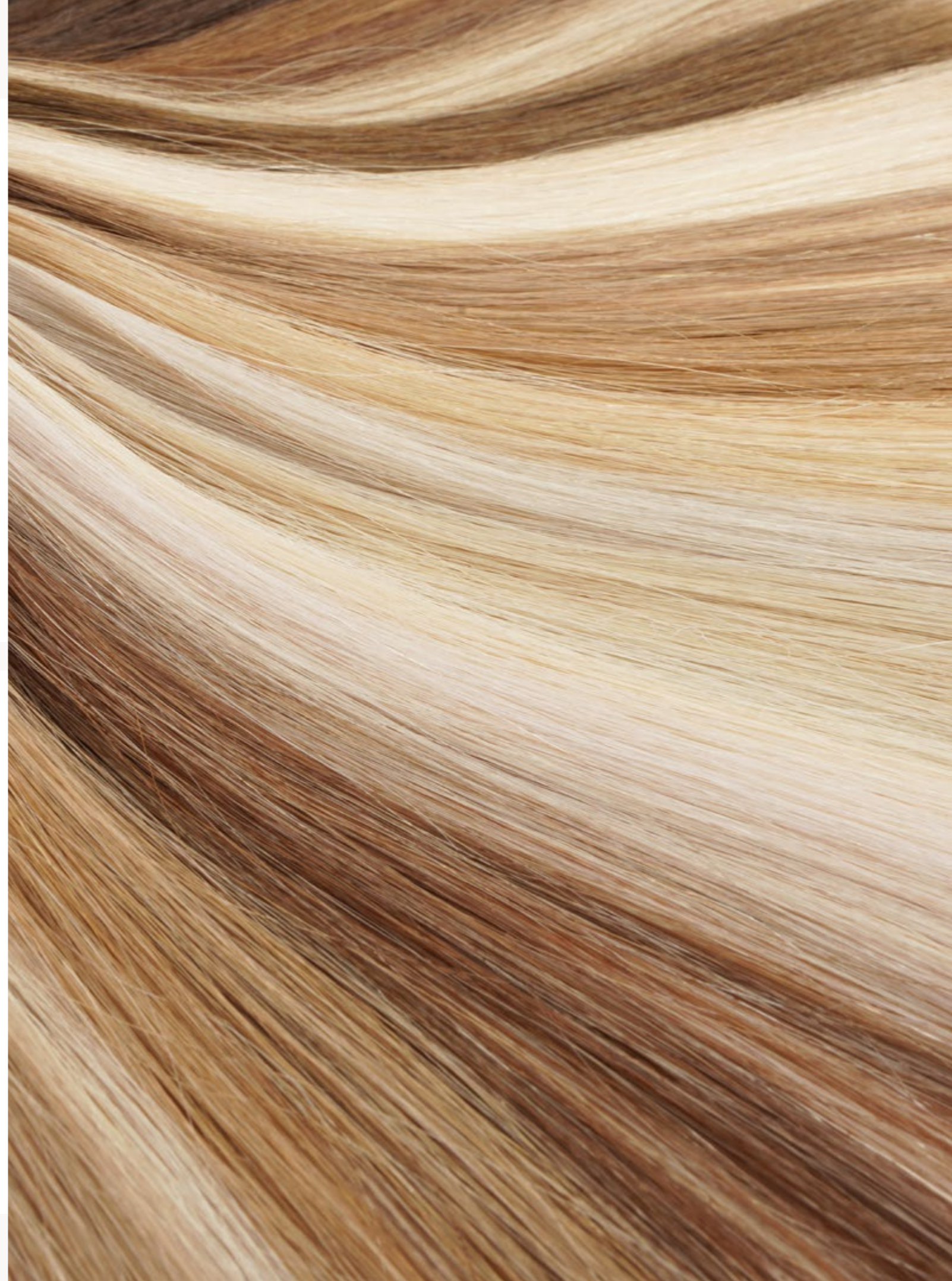


Colors

Scan QR Code 

#1	#1B	#2	#3	#4	#6	#7C	#8	#10	#12
#14	#16	#18	#22	#27	#30	#33	#60	#99J	#530
#613	#695T	#CHERRY	#WHITE	#GRAY	#1B/33	#2/30	#14/22	#18/22	#4/8/18

Women's Human Hair Color Ring





Give your client a stunning makeover with our tape-on toppers, expertly crafted from premium materials using the latest techniques. They'll enjoy a seamless blend of comfort and a natural look, leaving them feeling and looking truly extraordinary!

02

TAPE-ON TOPPERS

SEAMLESS BLENDING

SOLID BONDING

PROFESSIONAL HAIR REPLACEMENT

INSEUW

Base Design Natural-looking injected thin skin 0.08mm

Hair Type 100% European hair

Cap Sizes 8"x10"/ 20x25cm

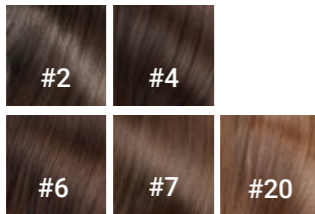
Lengths 6",8",10"/ 15cm, 20cm, 25cm

Density 130%

Wave/Curl Natural straight

Colors

Scan QR Code



Women's Human Hair Color Ring



N6W

Base Design Breathable, comfy and natural lace with easy-to-maintain clear PU

Hair Type 100% Indian hair

Cap Sizes 7"x9"/ 17.5x22.5cm

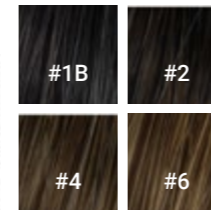
Lengths 14",16",18",20"/30cm, 35cm, 40cm, 45cm, 50cm

Density 130%

Wave/Curl Natural straight

Colors

Scan QR Code



Women's Human Hair Color Ring



HS1W

Base Design Super thin skin 0.08mm

Hair Type 100% Remy hair

Cap Sizes 7"x9"/ 17.5x22.5cm

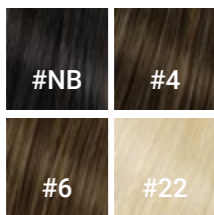
Lengths 14",16",18",20"/ 30cm, 35cm, 40cm, 45cm, 50cm

Density 130%

Wave/Curl Natural straight

Colors

Scan QR Code



Women's Human Hair Color Ring



AUSTRALIAW

Base Design Breathable, comfy and natural lace with durable poly

Hair Type 100% Remy hair

Cap Sizes 7"x9"/ 17.5x22.5cm

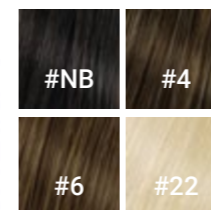
Lengths 14",16",18",20"/ 30cm, 35cm, 40cm, 45cm, 50cm

Density 130%

Wave/Curl Natural straight

Colors

Scan QR Code



Women's Human Hair Color Ring





Our integration toppers are expertly crafted to blend perfectly with your client's natural hair, offering an incredibly natural look and unmatched comfort.

03

INTEGRATION TOPPERS

PERFECTLY BREATHABLE

UNMATCHED REALISM

IMPECCABLE HAIR INTEGRATION

TEENA

Base Design T-shaped silk top with 7x7mm PE lines

Hair Type 100% Mongolian remy hair

Cap Sizes 6"x6.5"/ 15x16.25cm

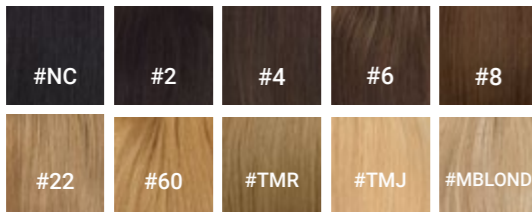
Lengths 14"/ 35cm

Density 120%

Wave/Curl Natural straight

Colors

Scan QR Code



Women's Premier Human Hair Color Ring



STF

Base Design Realistic silk top with fishnet

Hair Type 100% Remy hair

Cap Sizes 6" x 6"/ 15x15cm

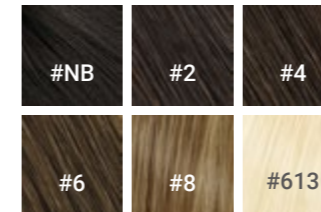
Lengths 16"/ 40cm

Density 150%

Wave/Curl Natural straight

Colors

Scan QR Code



Women's Human Hair Color Ring



PES-2

Base Design Thin skin front with PE line

Hair Type 100% Indian Remy hair

Cap Sizes 16cm x 18cm

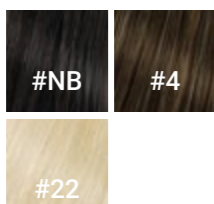
Lengths 10", 12"/ 25cm, 30cm

Density 130%

Wave/Curl Natural straight

Colors

Scan QR Code



Women's Human Hair Color Ring





Hair frontals and closures are crafted to cover the key areas of the scalp affected by hair loss. They offer an effective and cost-efficient solution to help your clients achieve a fuller, more polished look.

04

FRONTALS & CLOSURES

LIGHTWEIGHT

EASY BLENDING

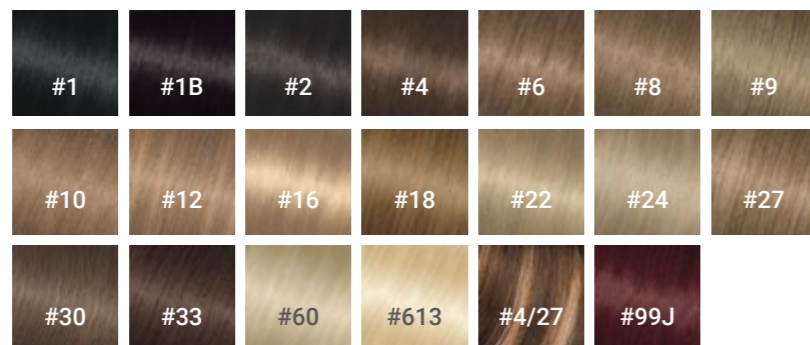
BUDGET-FRIENDLY

LACE FRONTAL



Base Design Normal lace, HD lace
Hair Type 100% Remy hair
Cap Sizes 13" x 4", 13" x 6"/ 32.5x10cm, 32.5x15cm
Lengths 14"-20"/ 35-50cm
Density 120%
Wave/Curl Straight, Silky Straight, Kinky Straight, Body Wave, Kinky Curl, Loose Wave, Afro Kinky Curl, Deep Wave, Jerry Curl, Water Wave, Deep Curl, Deep Body Wave, etc

Colors



Women's Human Hair Color Ring

LACE CLOSURE



Base Design Normal lace, HD lace
Hair Type 100% Remy hair
Cap Sizes 4" x 4", 5" x 5", 6" x 6' / 10x10cm, 12.5x12.5cm, 15x15cm
Lengths 14"-20"/ 35-50cm
Density 120%
Wave/Curl Straight, Silky Straight, Kinky Straight, Body Wave, Kinky Curl, Loose Wave, Afro Kinky Curl, Deep Wave, Jerry Curl, Water Wave, Deep Curl, Deep Body Wave, etc

Colors



Women's Human Hair Color Ring



Medical wigs are designed for those experiencing hair loss due to chemotherapy and other medical conditions. Their styles, colors, and bases are highly customizable.

05

MEDICAL GRADE WIGS

LIGHTWEIGHT

SCALP-FRIENDLY

CUSTOMIZABLE

EASY & COMFORTABLE TO WEAR

NATALIE

Base Design Diamond lace top, hand-tied french lace, silicone strips

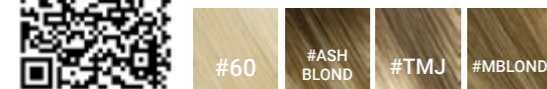
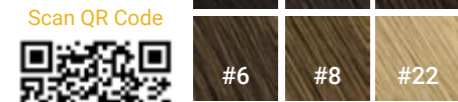
Hair Type 100% Mongolian Remy Hair

Cap Sizes Front to Back:13" (32.5cm)
Temple to Temple:13 1/4" (33.13cm)

Lengths 14"/ 35cm

Density 120%

Wave/Curl Natural straight



Women's Premier Human Hair Color Ring

HW-1

Base Design Lace front, silk mono with silicone tubes and machine wefts

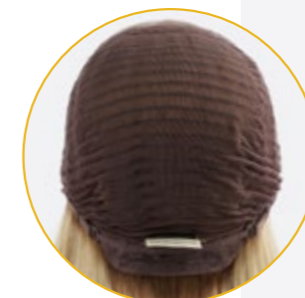
Hair Type 100% Chinese Virgin hair

Lengths 14"/ 35cm

Density 150%

Wave/Curl Natural straight

Feature Super natural and comfortable.Can be used as a medical wig.



Women's Human Hair Color Ring

HEATHER

Base Design Double-layer french lace top, elastic net, silicone strips

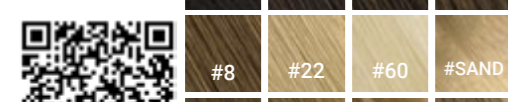
Hair Type 100% Mongolian Remy Hair

Cap Sizes Front to Back:14" (35cm)
Temple to Temple:14.5" (36.25cm)

Lengths 14"/ 35cm

Density 120%

Wave/Curl Natural straight



Women's Premier Human Hair Color Ring

HW-2

Base Design Hand-tied U-shaped lace front and top with machine wefts

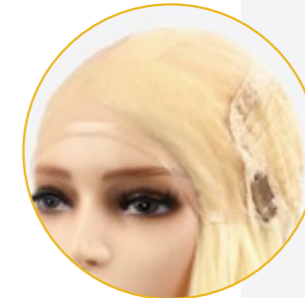
Hair Type 100% Chinese Virgin hair

Lengths 14", 18"/ 35cm, 45cm

Density 150%

Wave/Curl Natural straight

Feature Super natural and comfortable. Can be used as a medical wig.



Women's Human Hair Color Ring

HW-3

Base Design 4*4 Injected skin with silk mono and silicone tubes, lace front, machine wefts

Hair Type 100% Chinese Virgin hair

Lengths 14", 16"/ 35cm, 40cm

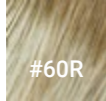
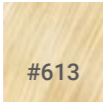
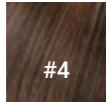
Density 150%

Wave/Curl Natural straight

Feature Super natural and comfortable. Can be used as a medical wig.

Colors

Scan QR Code



Women's Human Hair Color Ring



MD01

Base Design Silk top, elastic net, anti-slip silicone and lace front

Hair Type 100% Chinese Virgin hair

Lengths 14"/ 35cm

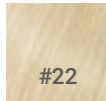
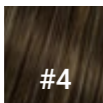
Density 130%

Wave/Curl Natural straight

Feature Super natural and comfortable. Can be used as a medical wig.

Colors

Scan QR Code



Women's Human Hair Color Ring





Fashion wigs deliver versatile styling and a natural look, offering a fast and effective way to elevate or transform your client's appearance.

06

FASHION WIGS

TOP-QUALITY HUMAN HAIR

NATURAL HAIR PARTS

RIGHT ON TREND

FLW

Base Design Hand-tied full lace with or without adjustable sidebands

Hair Type 100% Remy hair

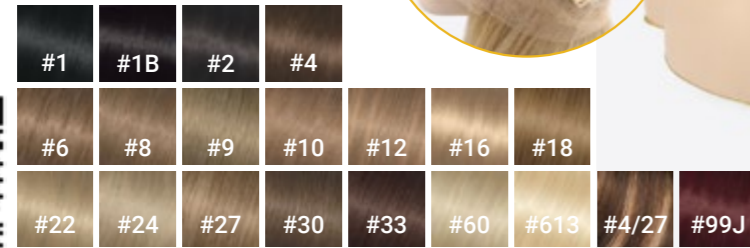
Lengths 8" -30'/ 20-75cm

Density 130%, 150%, 180%

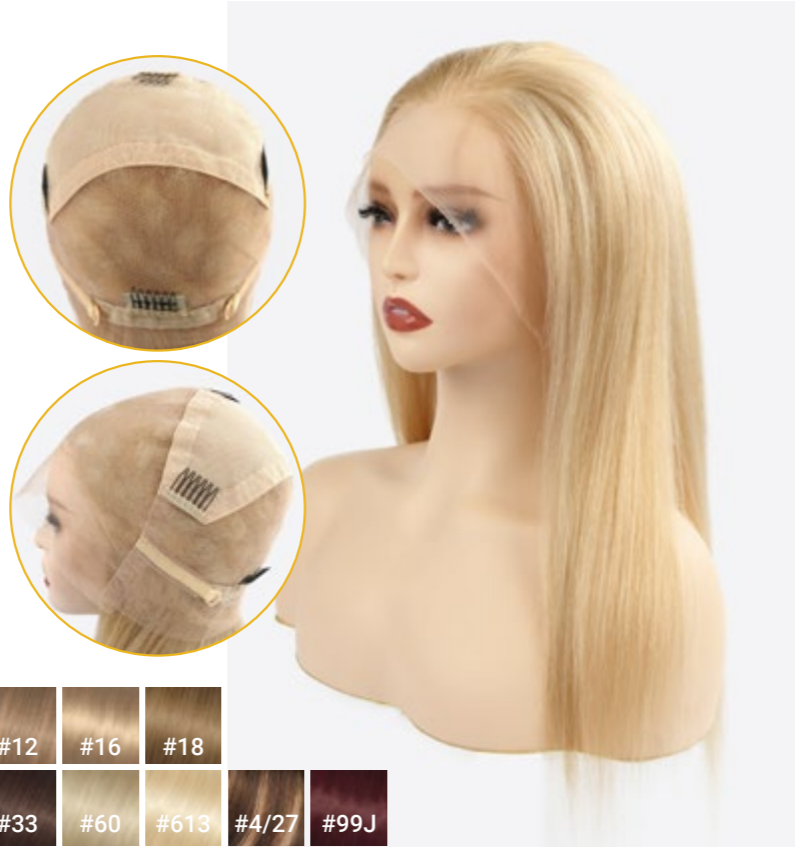
Wave/Curl Natural straight, Body wave, Deep wave, silky straight, Kinky curl, Kinky straight, Natural wave, Deep curl, Afro kinky curl, Jerry curl, etc.

Colors

Scan QR Code



Women's Human Hair Color Ring



LXM-O

Base Design Hand-tied O-shaped lace, machine wefts and an elastic band

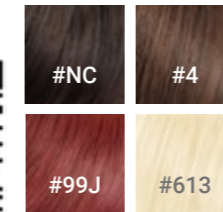
Hair Type 100% Remy hair

Lengths 8', 10'/ 20cm, 25cm

Wave/Curl Natural straight

Colors

Scan QR Code



Women's Human Hair Color Ring



LFW

Base Design Hand-tied lace with machine-made wefts at the back

Hair Type 100% Remy hair

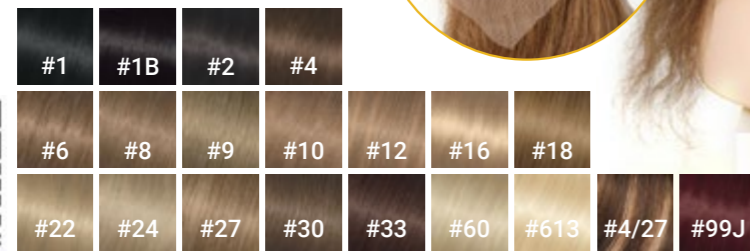
Lengths 8" -26"/ 20-65cm

Density 130%, 150%, 180%

Wave/Curl Natural straight, Body wave, Deep wave, Silky straight, Kinky curl, Kinky straight, Natural wave, Deep curl, Afro kinky curl, Jerry curl, etc.

Colors

Scan QR Code



Women's Human Hair Color Ring



LXM-T

Base Design Hand-tied T-part lace, machine wefts and an elastic band

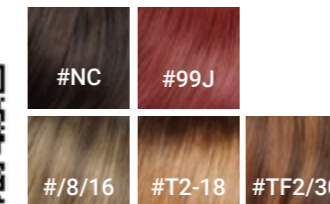
Hair Type 100% Remy hair

Lengths 10'/ 25cm

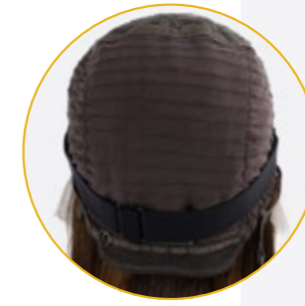
Wave/Curl Natural straight

Colors

Scan QR Code



Women's Human Hair Color Ring



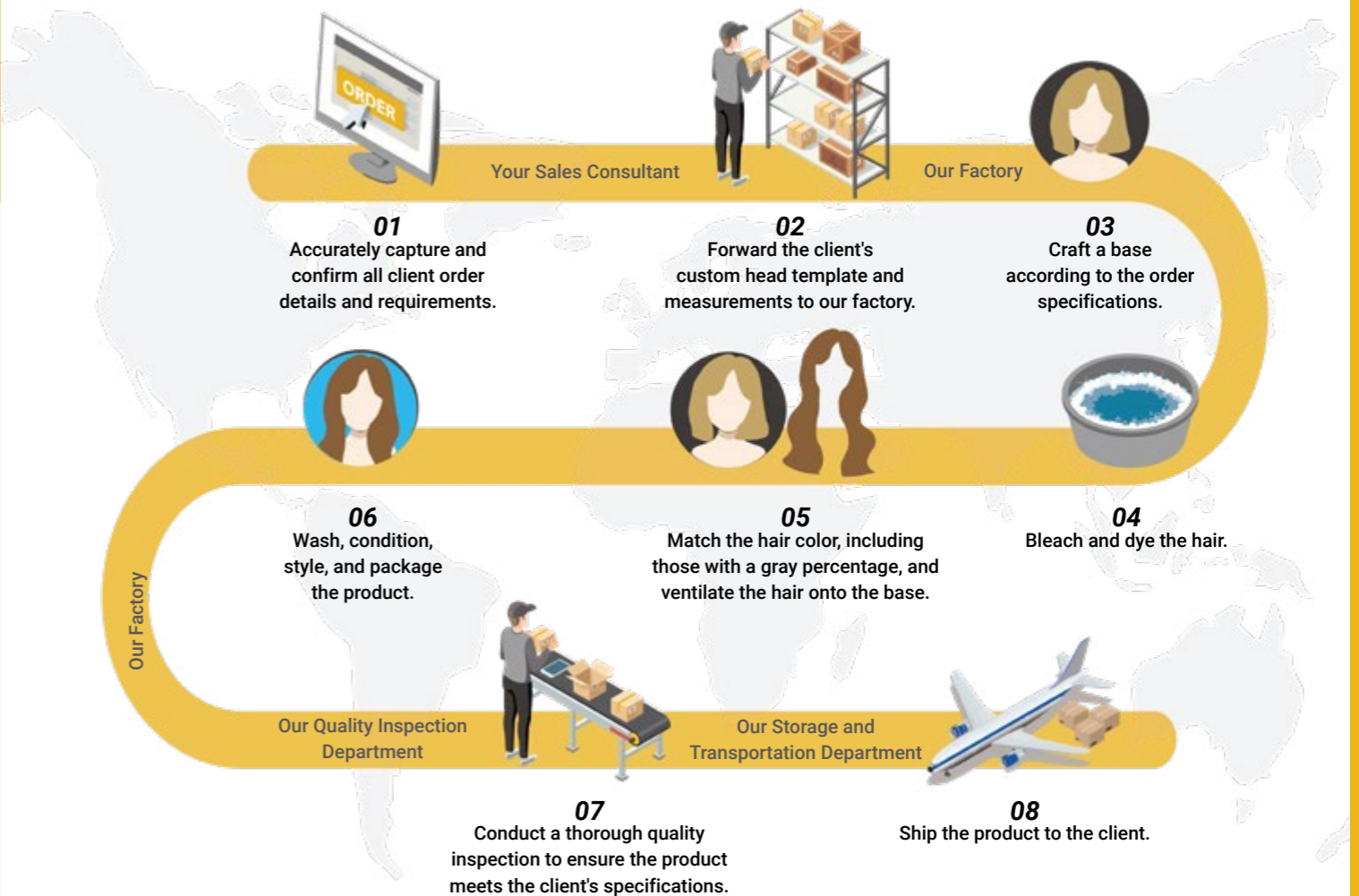
07

CUSTOMIZATION

We follow a streamlined process to craft specialized hairpieces tailored to meet your business needs.



STEPS OF PLACING A CUSTOM ORDER

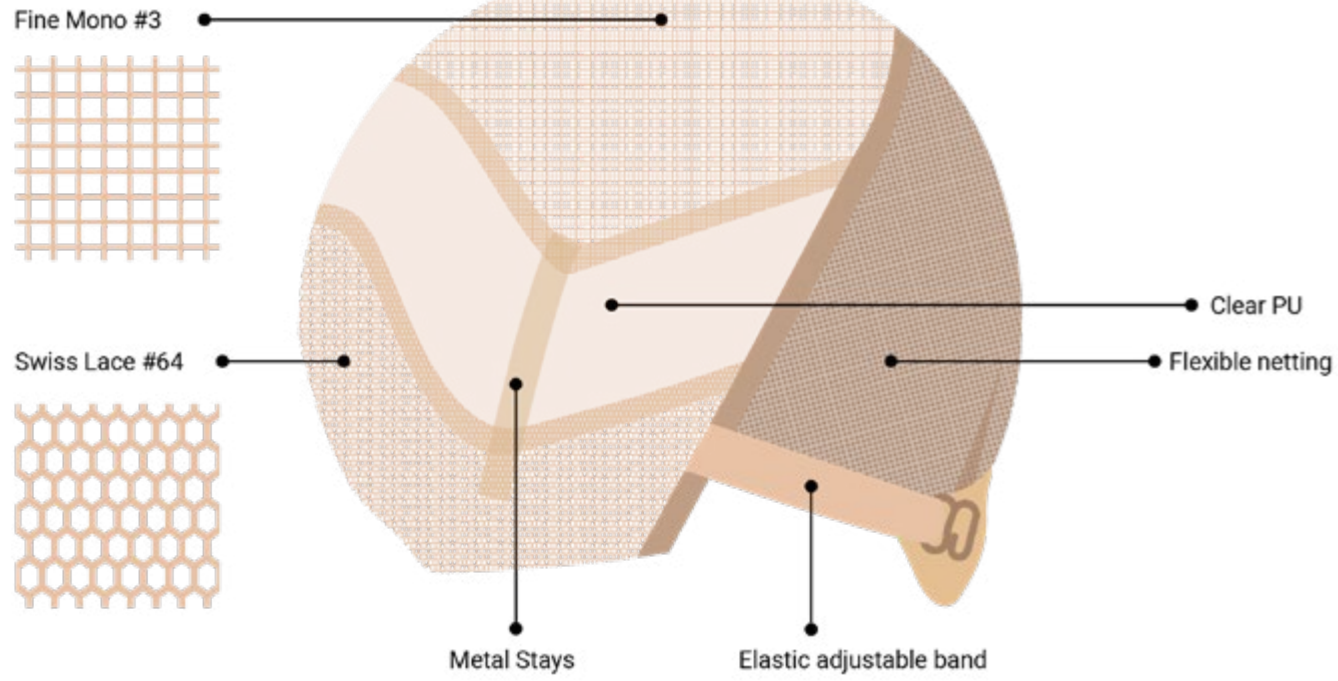


*Refer to our custom base designs tailored to
your clients' specific requirements.*

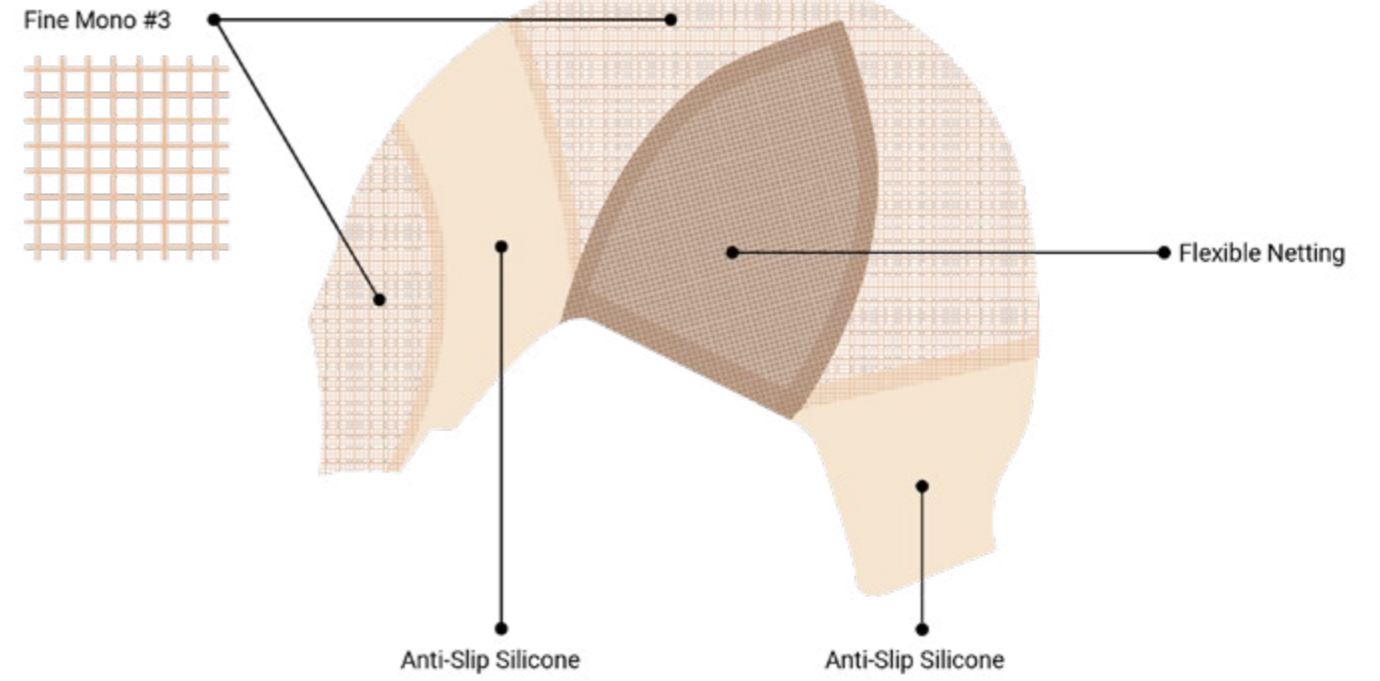
08

**BASE
CONSTRUCTION**

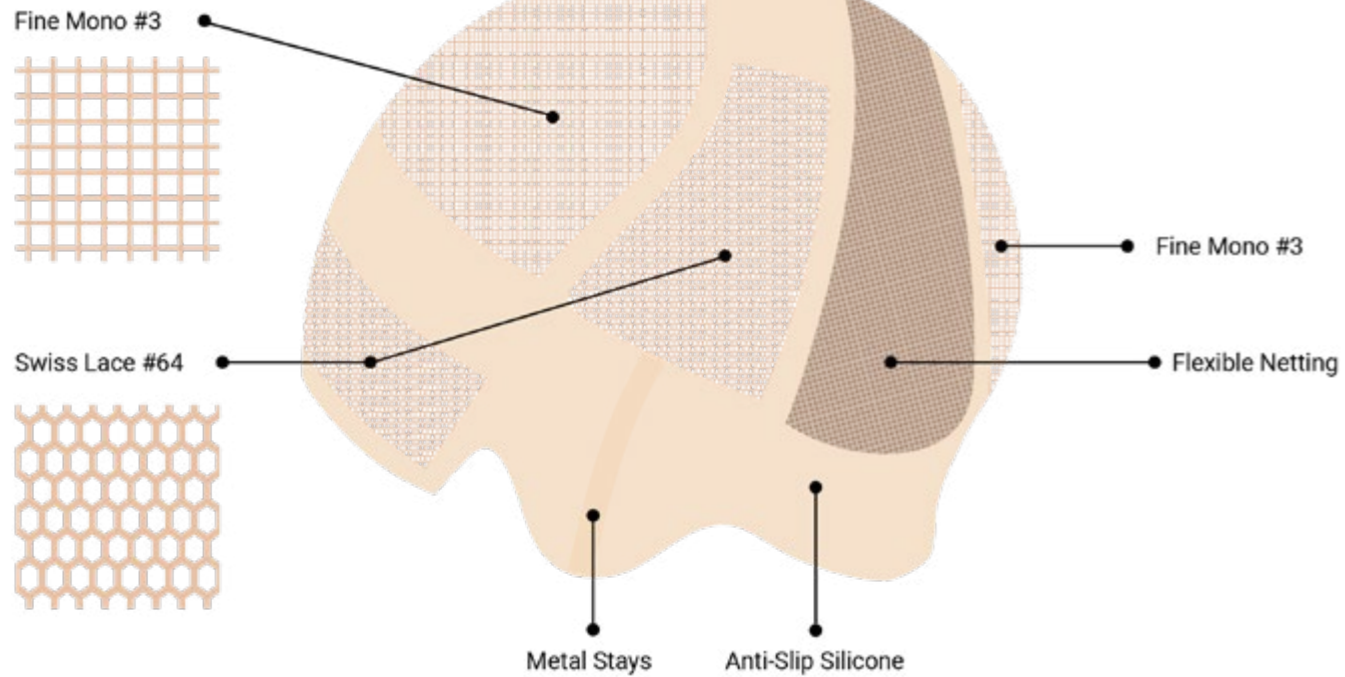
NTW1



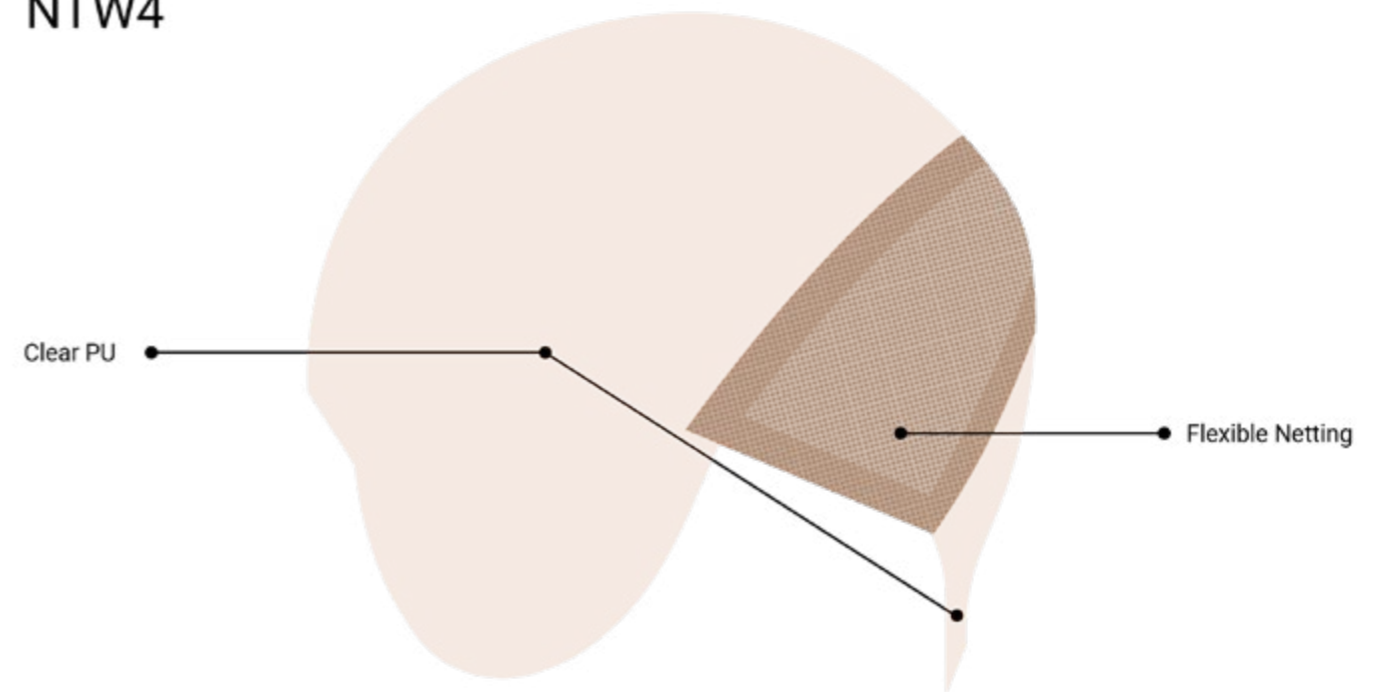
NTW3



NTW2



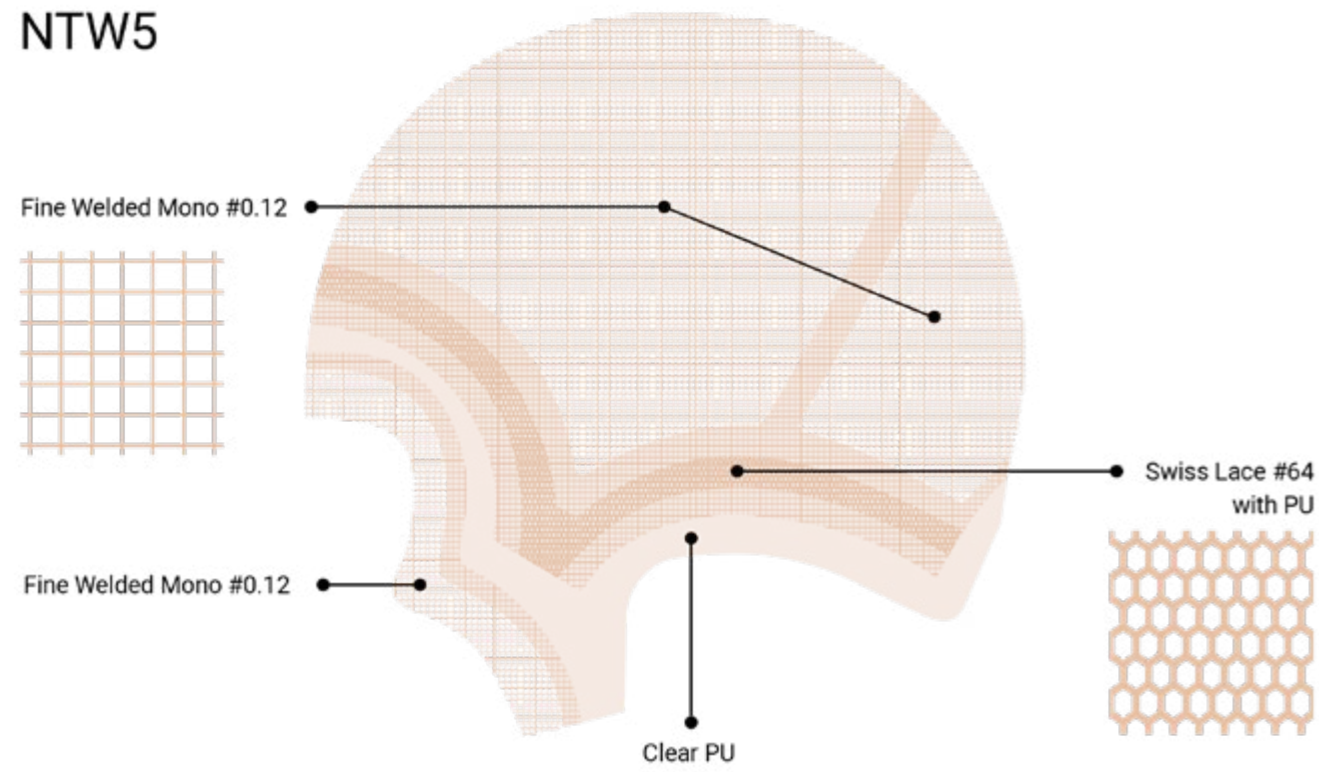
NTW4



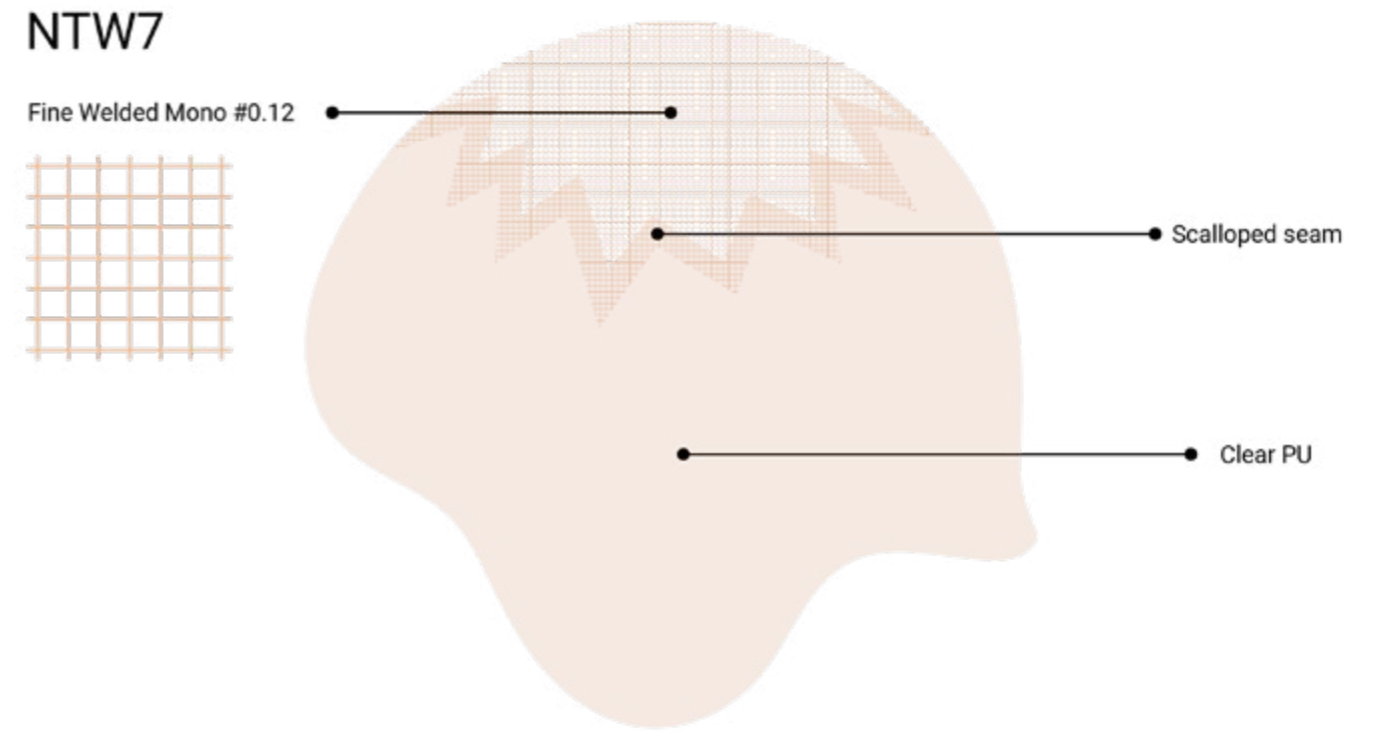
BASE CONSTRUCTION

BASE CONSTRUCTION

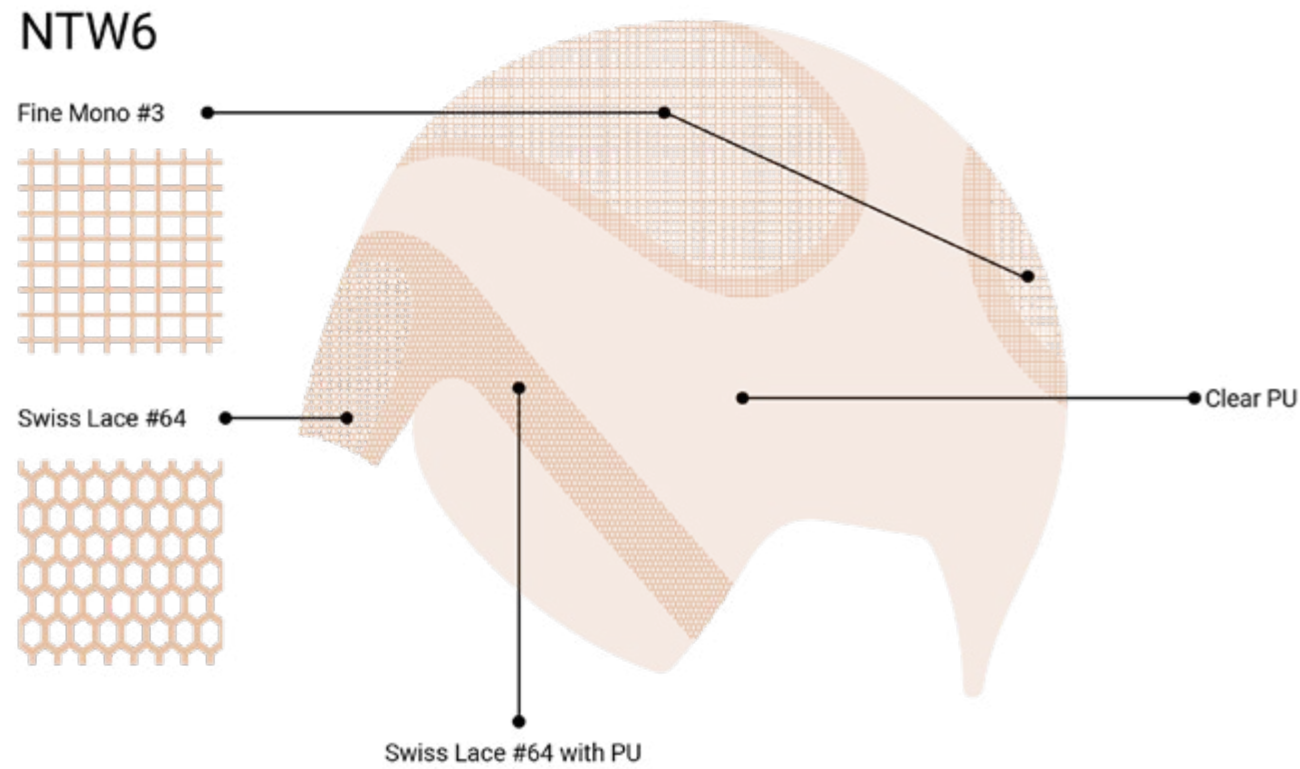
NTW5



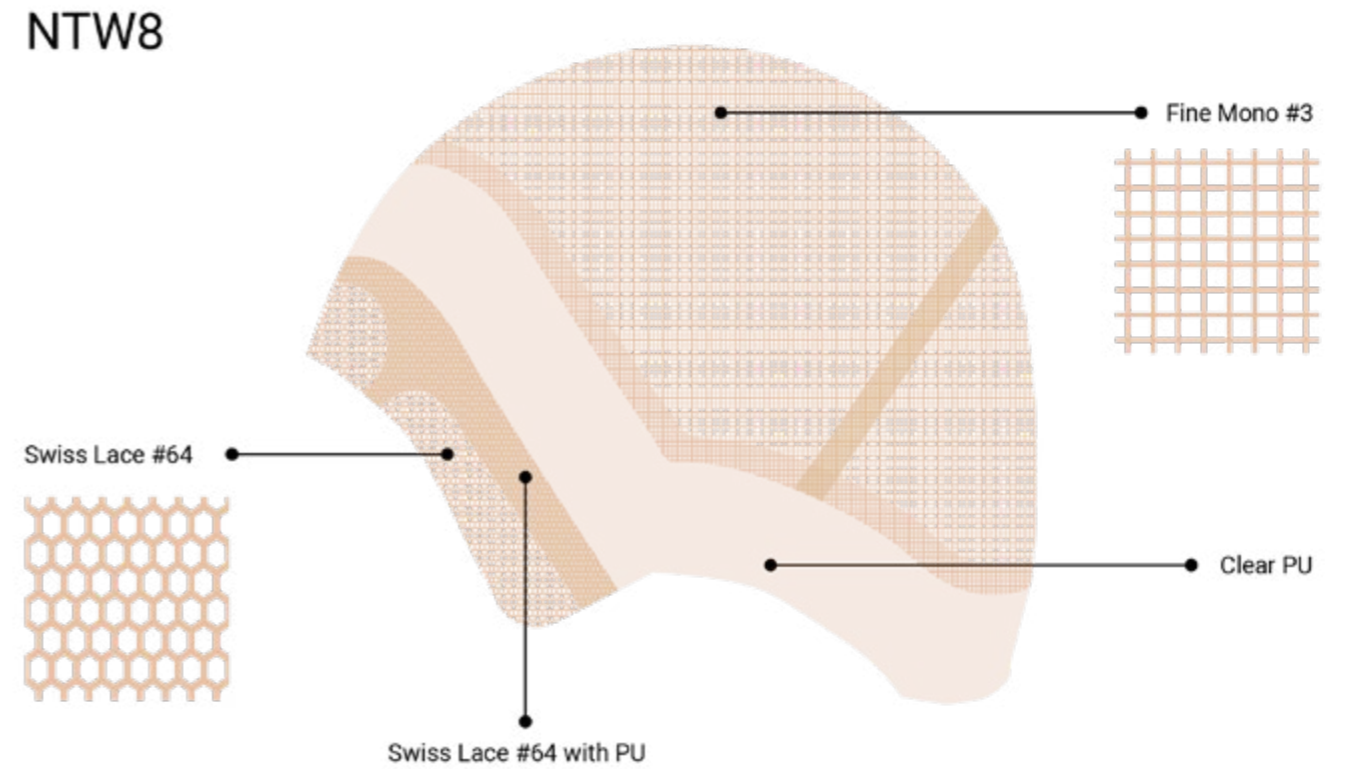
NTW7



NTW6



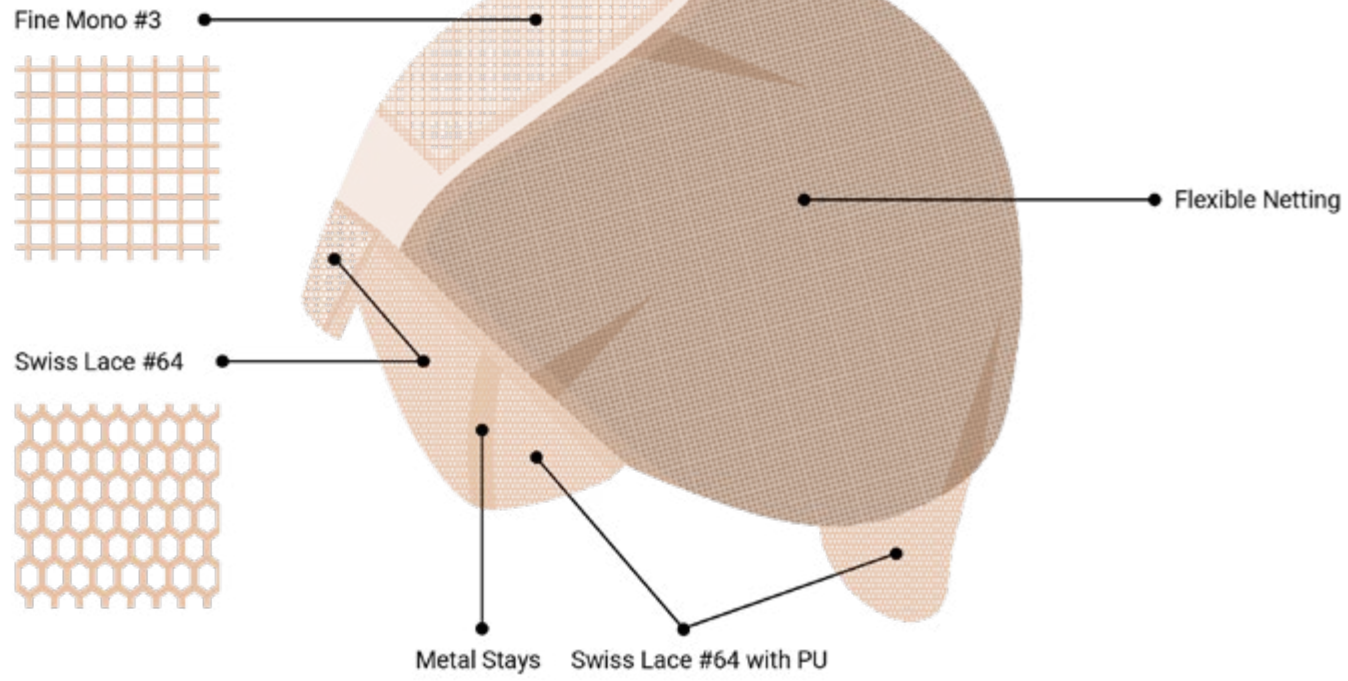
NTW8



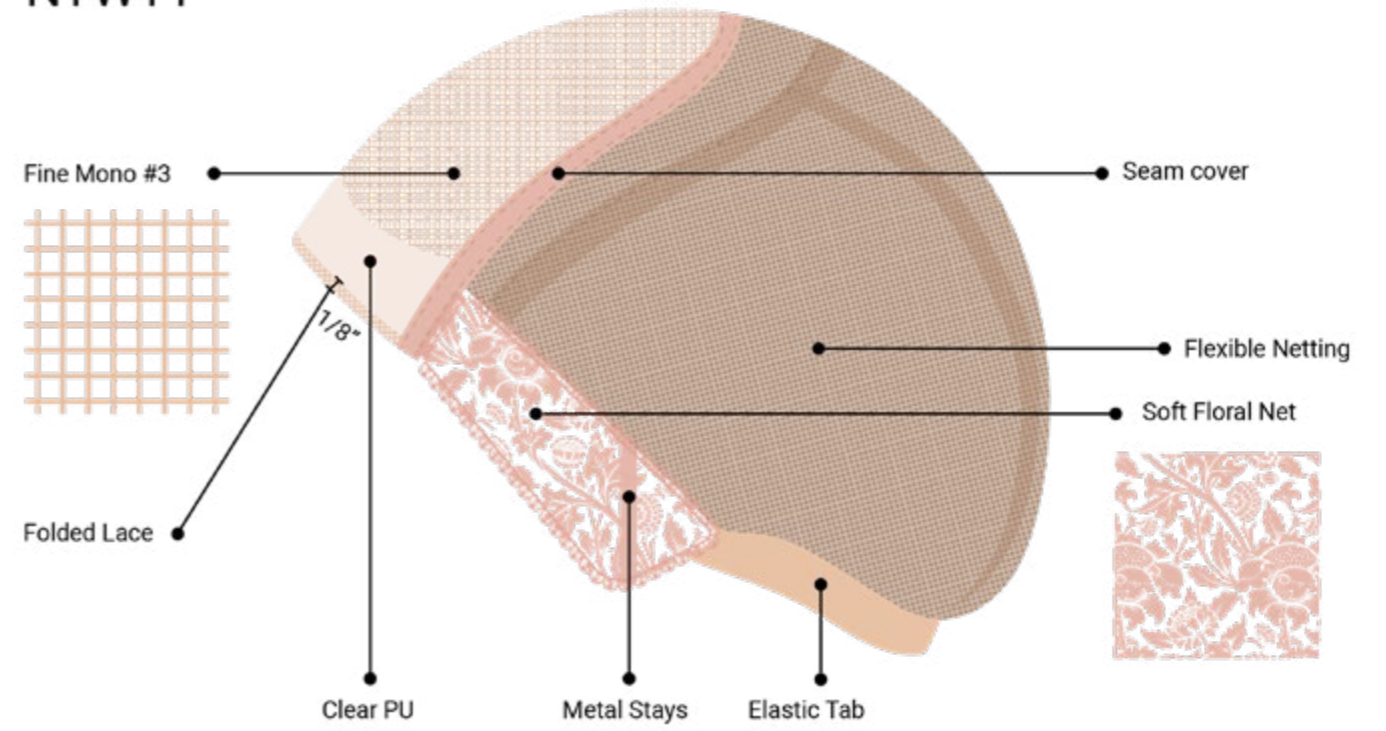
BASE CONSTRUCTION

BASE CONSTRUCTION

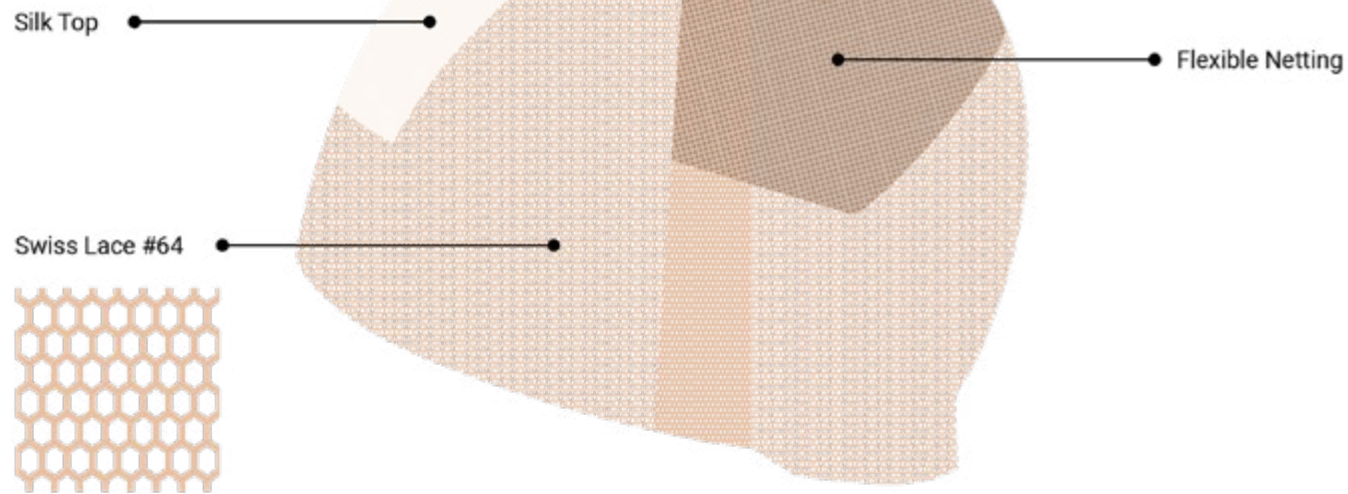
NTW9



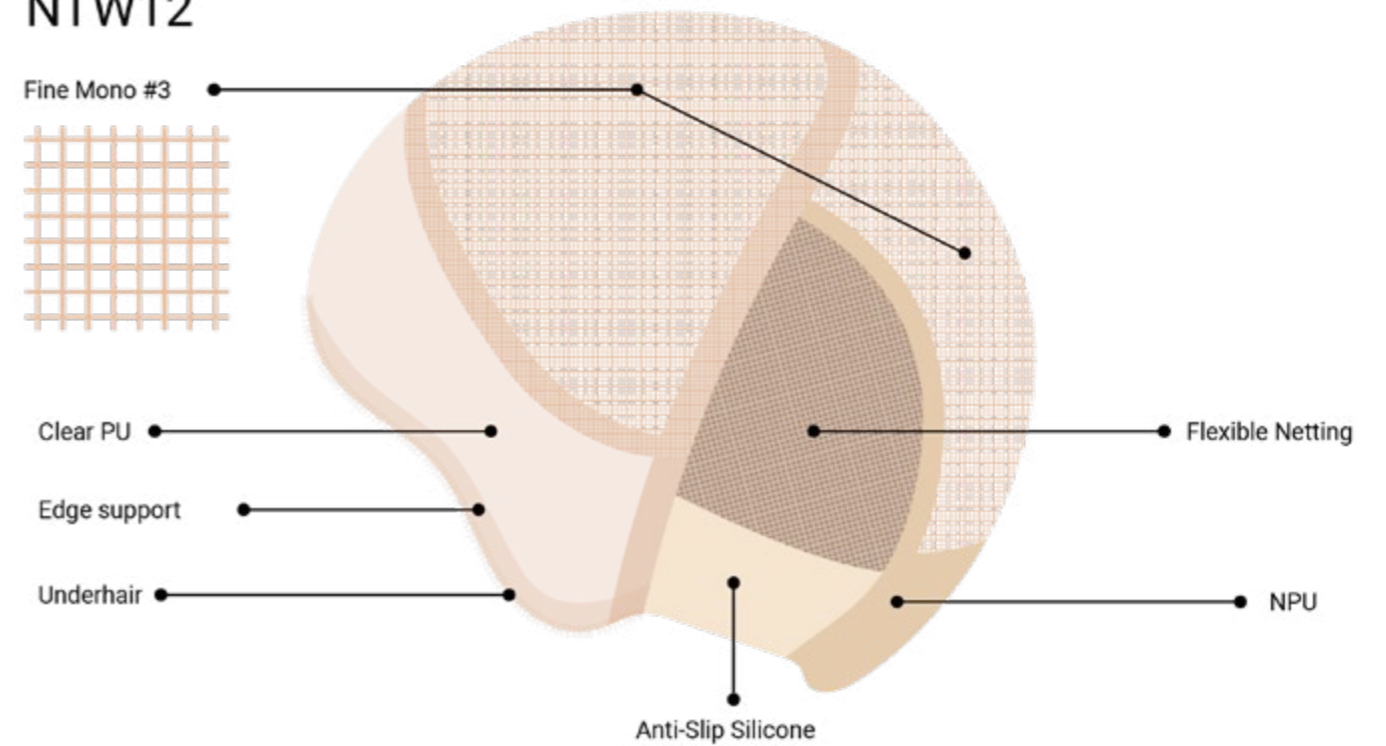
NTW11



NTW10



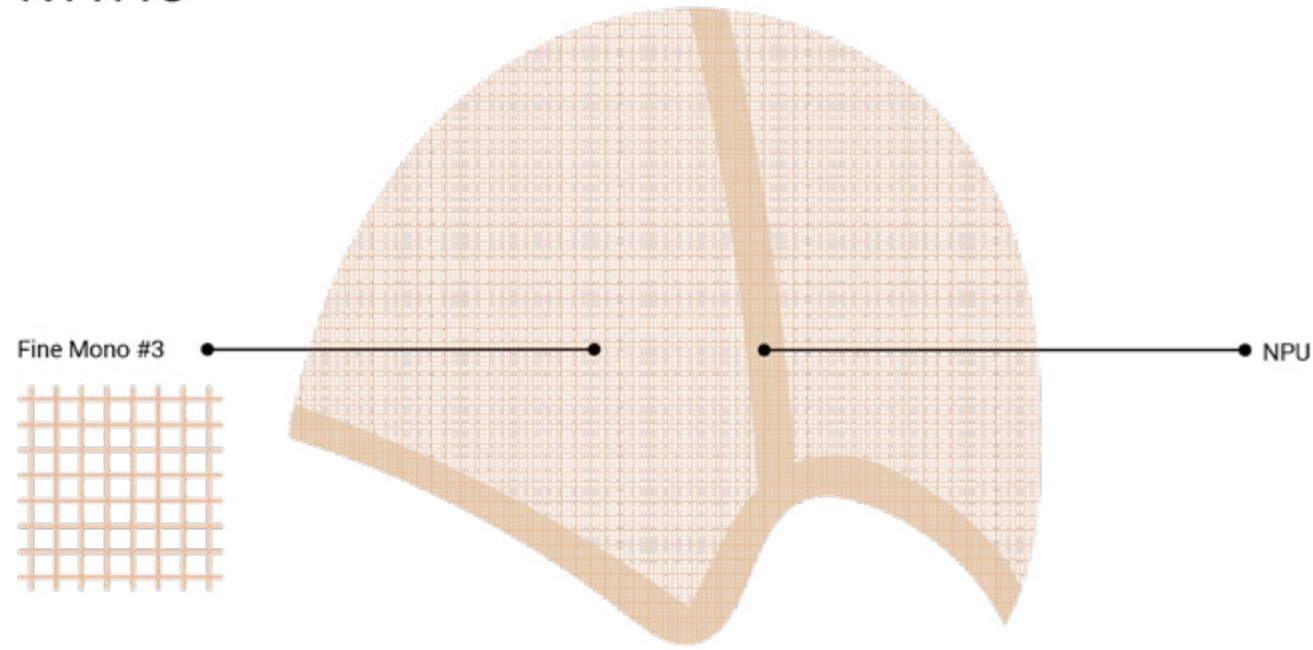
NTW12



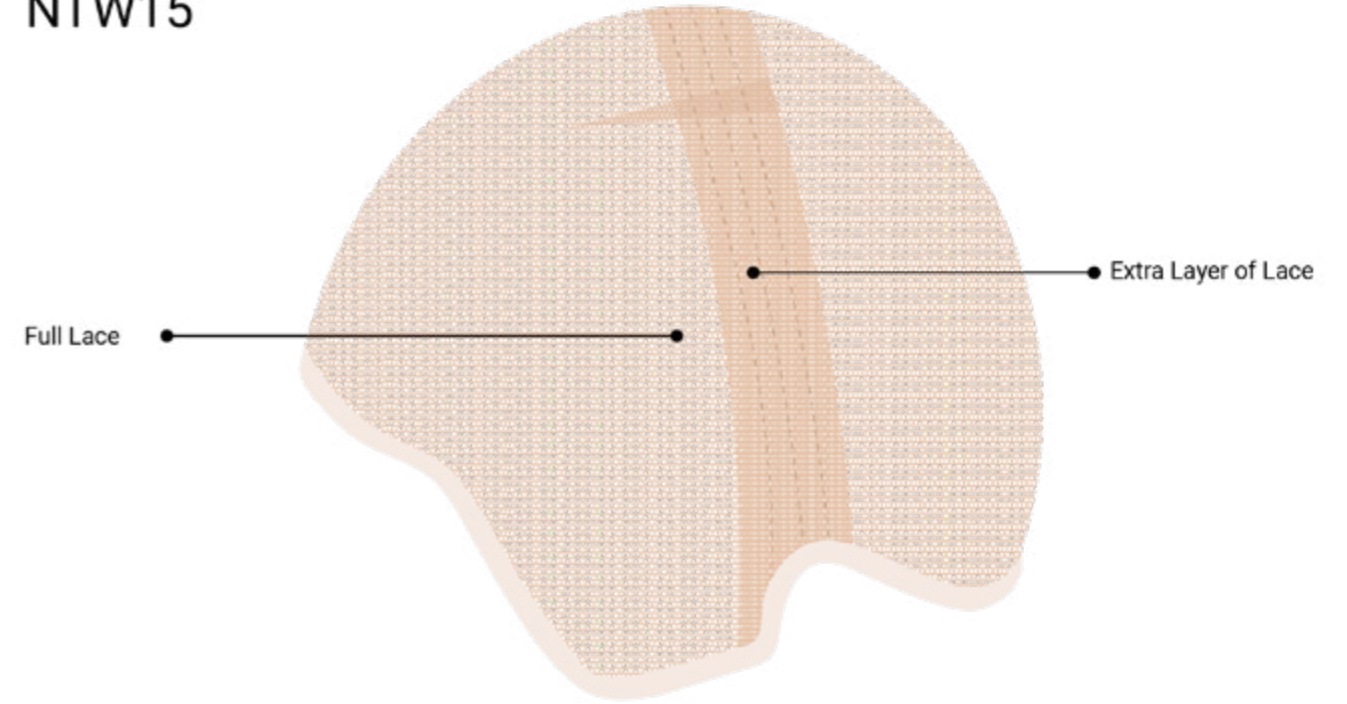
BASE CONSTRUCTION

BASE CONSTRUCTION

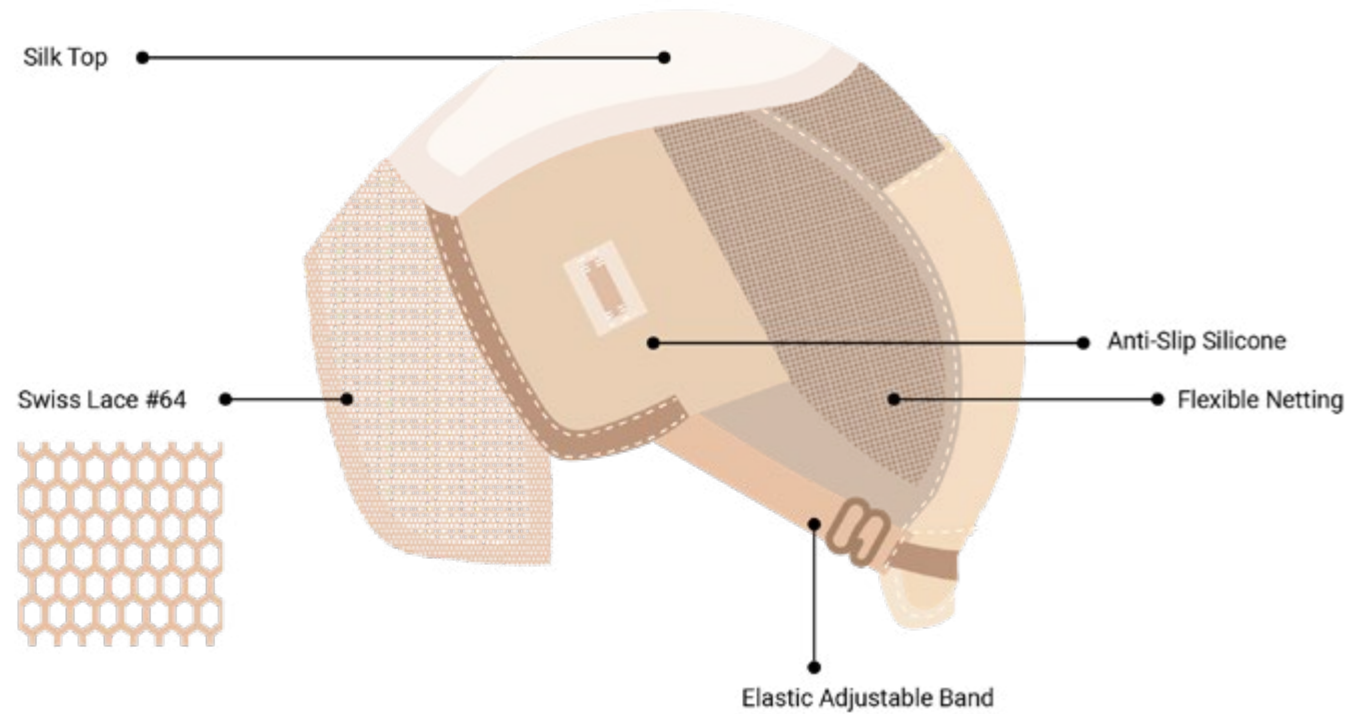
NTW13



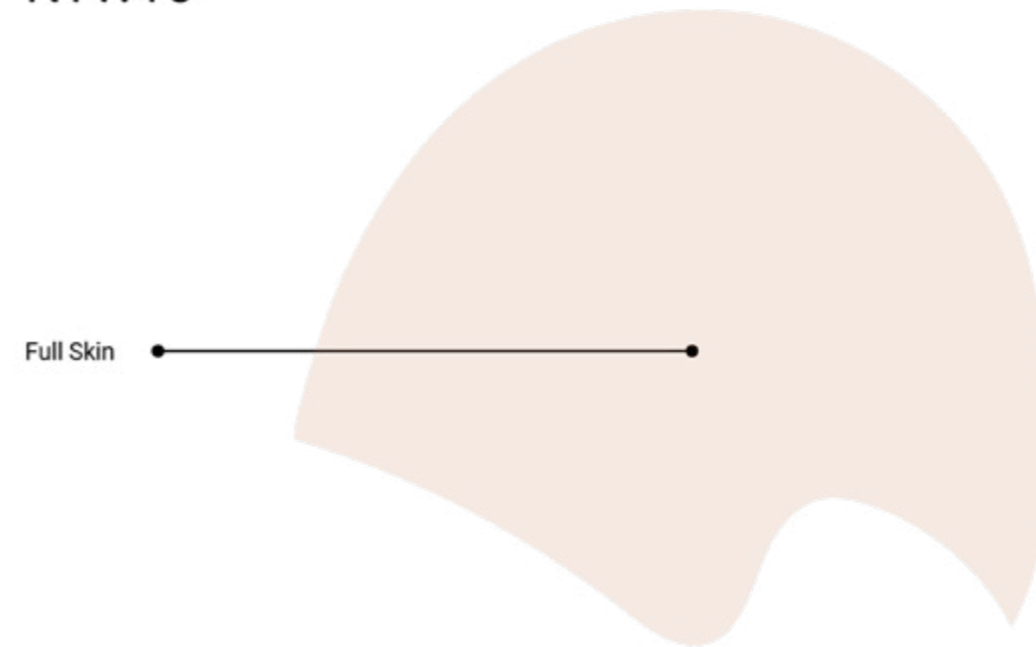
NTW15



NTW14



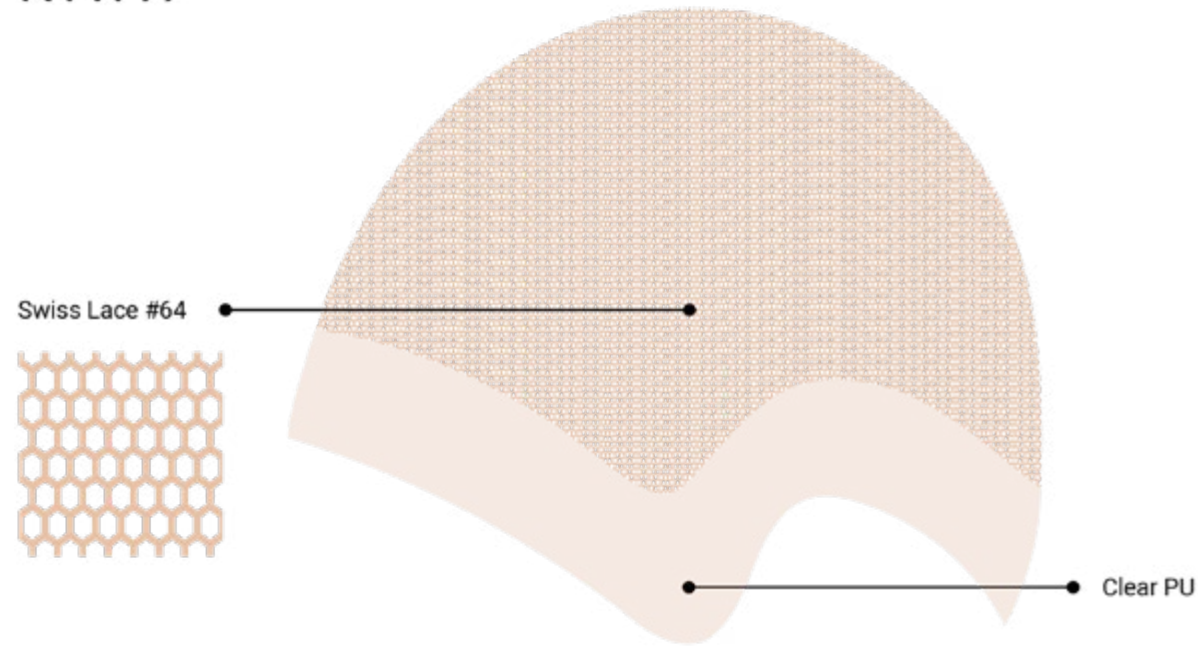
NTW16



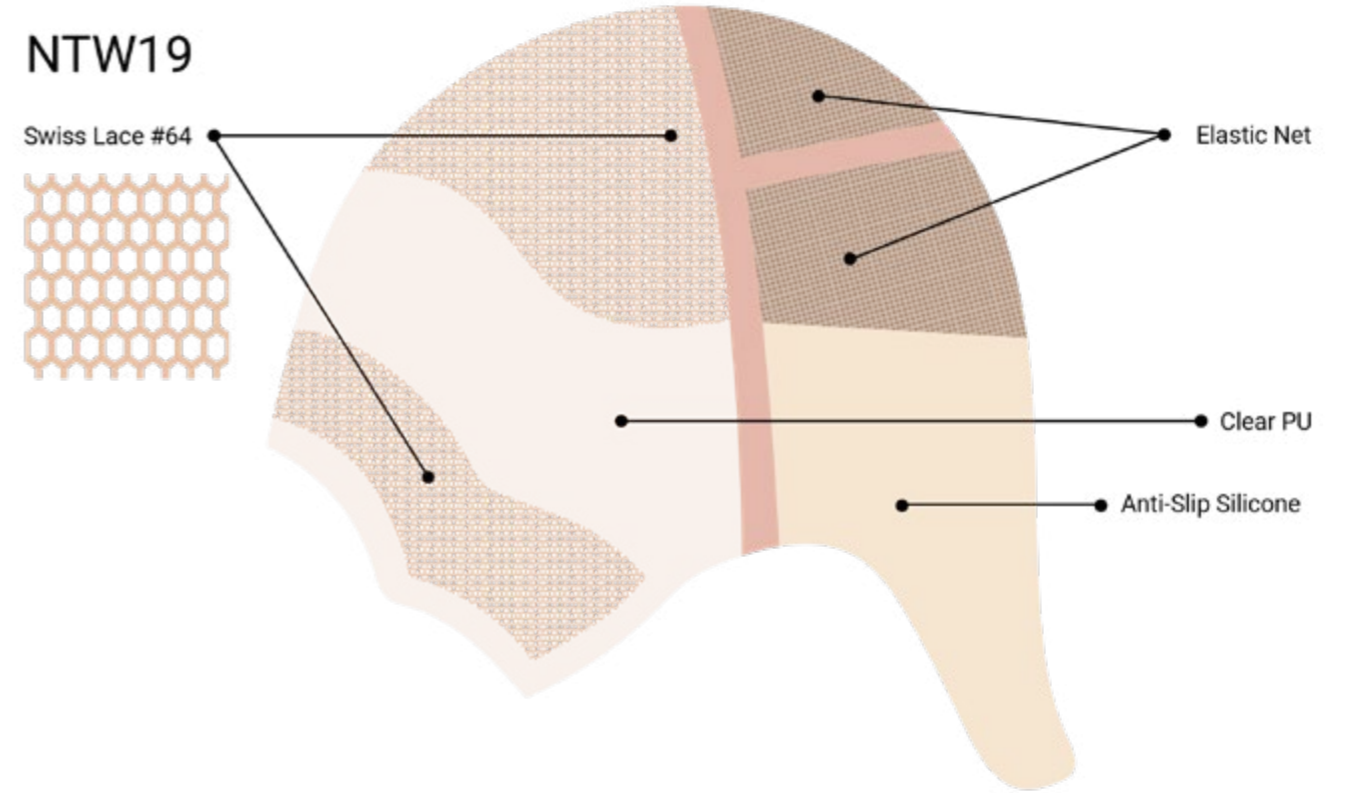
BASE CONSTRUCTION

BASE CONSTRUCTION

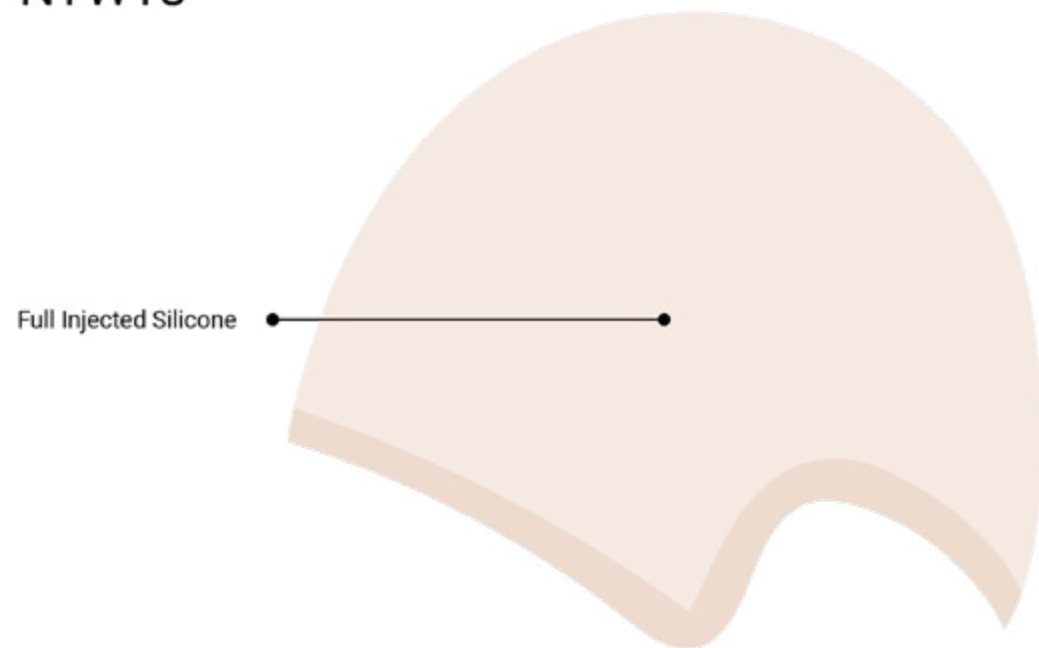
NTW17



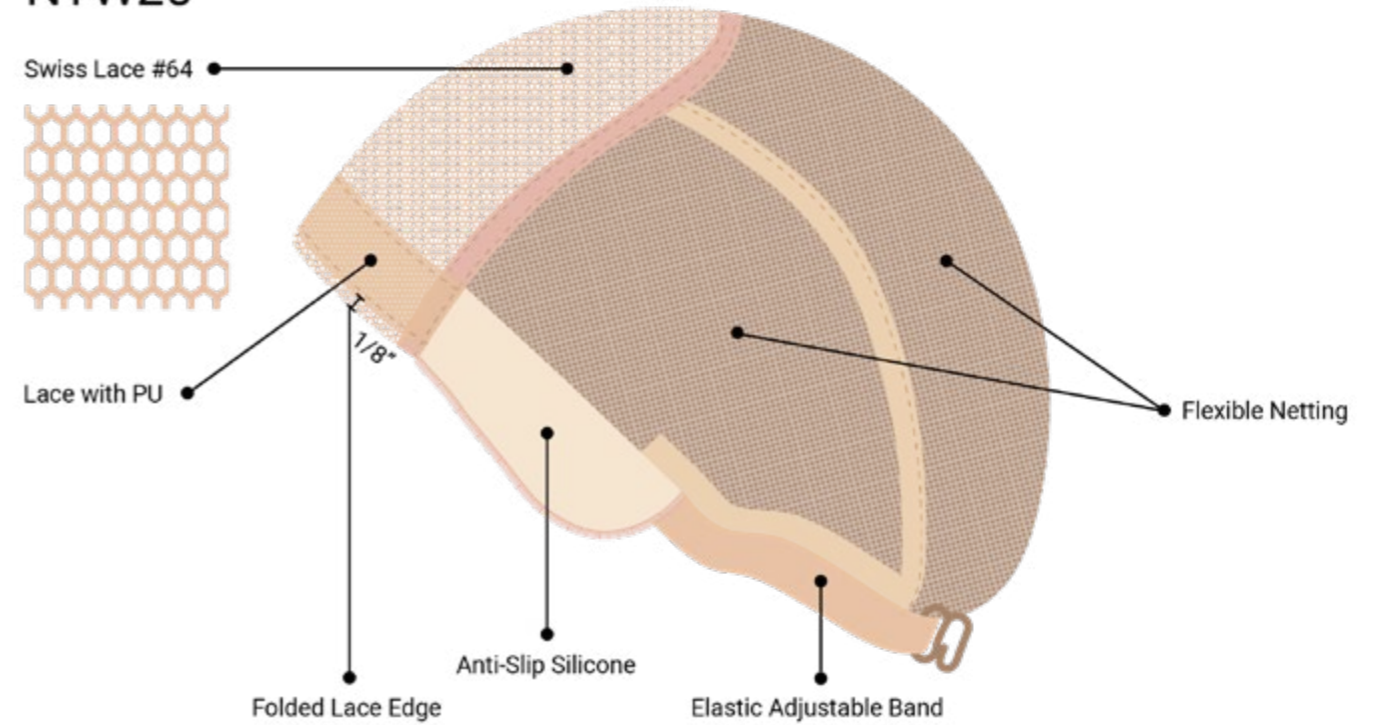
NTW19



NTW18



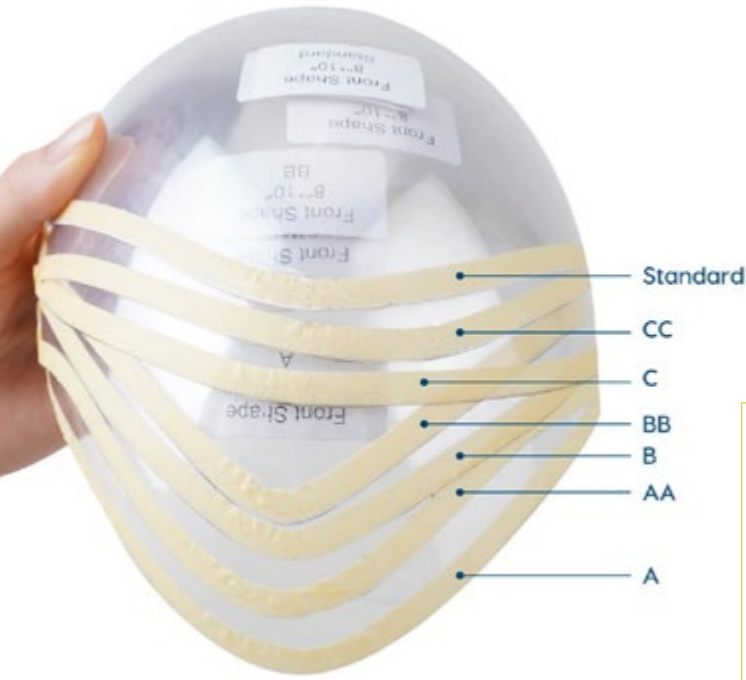
NTW20



BASE CONSTRUCTION

BASE CONSTRUCTION

SUPPLIES



Front Contour Mold



Adjustable Wig Stand



Hair System Wig Stand



9-tooth wig clips



6-tooth wig clips



Hair Density Chart



Base Material Chart



Net Color Chart-Skin



Net Color Chart-Lace

BEFORE & AFTER



HW1



CUSTOM ORDER



HW-2



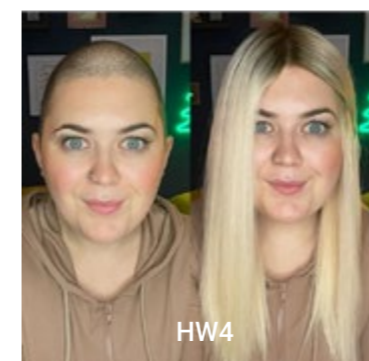
MONOT



HW3



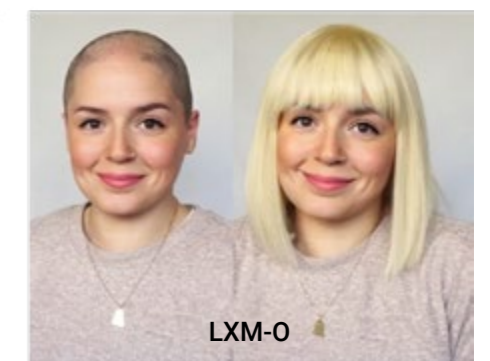
NATALIE



HW4



STWL



LXM-O

WOMEN'S HUMAN HAIR COLOR RING



*The color pictured may differ slightly from the actual colors.



WOMEN'S PREMIER HUMAN HAIR COLOR RING



*The color pictured may differ slightly from the actual colors.

